

[Support Package]

ID	TS-00108	Created	Aug. 20, 2007
Category	Software	Updated	
Product	USB joystick	Sub Category	NVR/Activator
Purpose	How to configure USB joystick to work with NVR 2.0?		
Support URL	http://www.acti.com/support		
Tech Support	Customer.service@acti.com		
MSN Messenger ID	Customer.service@acti.com		

How to configure USB joystick to work with NVR 2.0 /Activator 3.0?

This support package is to show users how to test the compatibility and configure between USB joysticks

<i>Chapter1.How to test compatibility of USB joystick with NVR2.0.....</i>	<i>2</i>
<i>Chapter2. How to configure USB joystick to work with NVR.....</i>	<i>5</i>

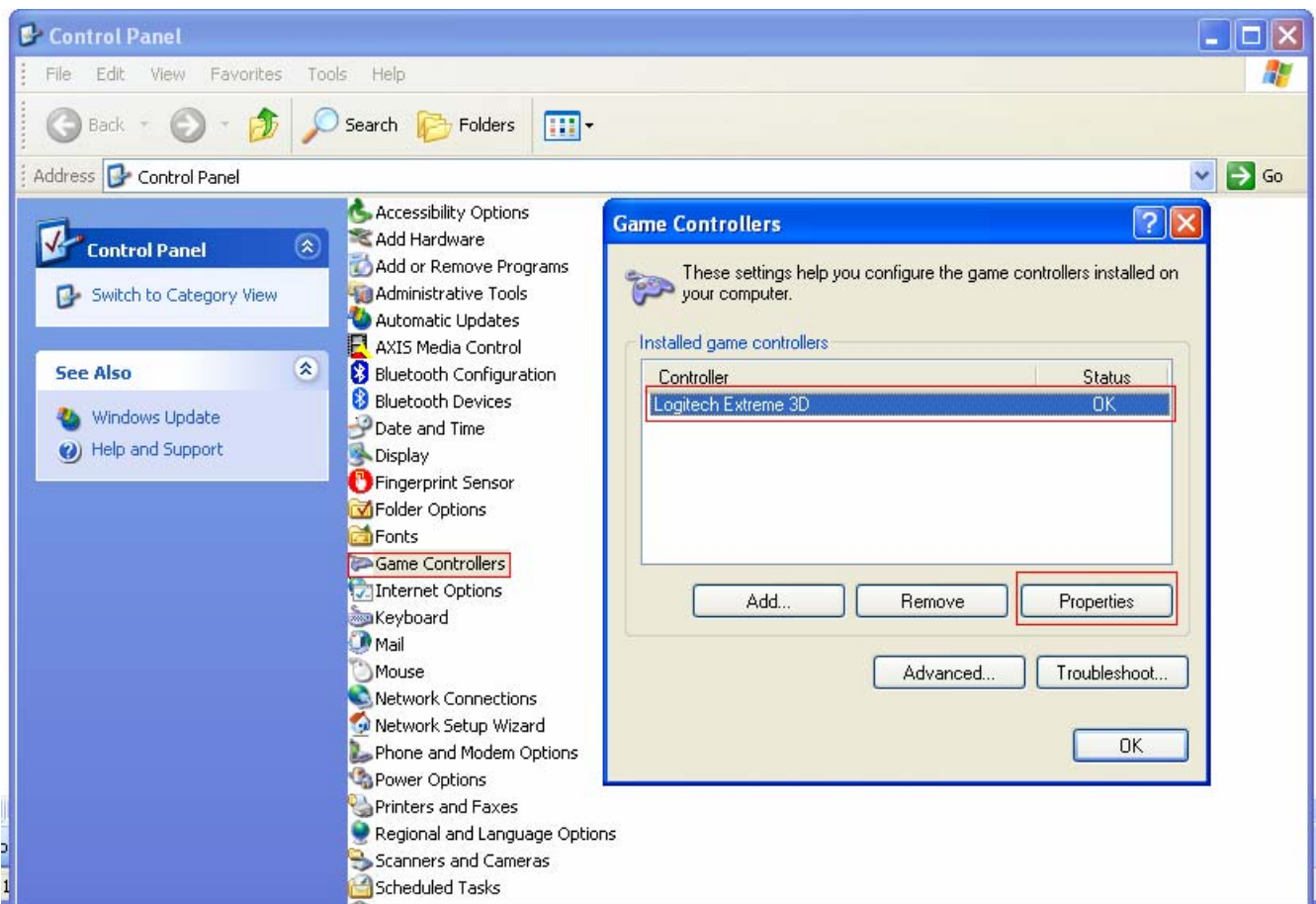
[Support Package]

Chapter1.How to test compatibility of USB joystick with NVR2.0

Before test the compatibility of USB joystick with NVR2.0, you have to make sure if your USB joystick is compatible with Microsoft Windows XP or Windows 2003.

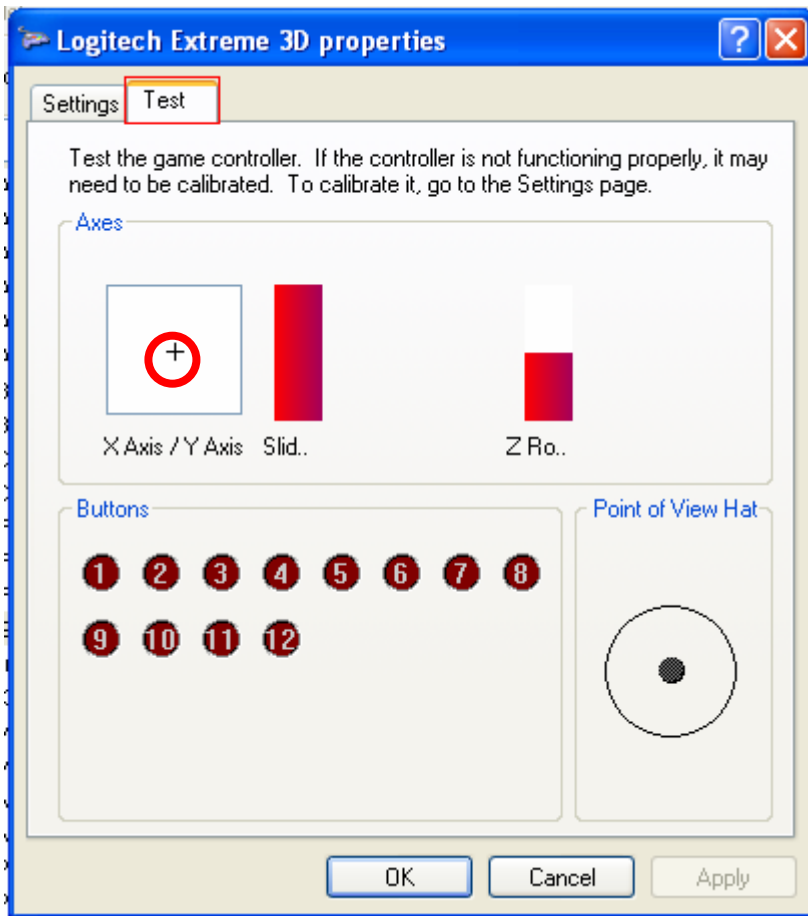
Step1. Plug in the USB joystick

Step2. Click on Start\Control Panel\Game Controllers



Step3. Click on Properties button, then you will see the window below. If you don't see any controller shown in the Game Controllers windows, please unplug and plug in the USB connector, then double click on Game Controllers icon. If you still don't see any controller shown up, please make sure if your USB controller is Microsoft Windows supported.

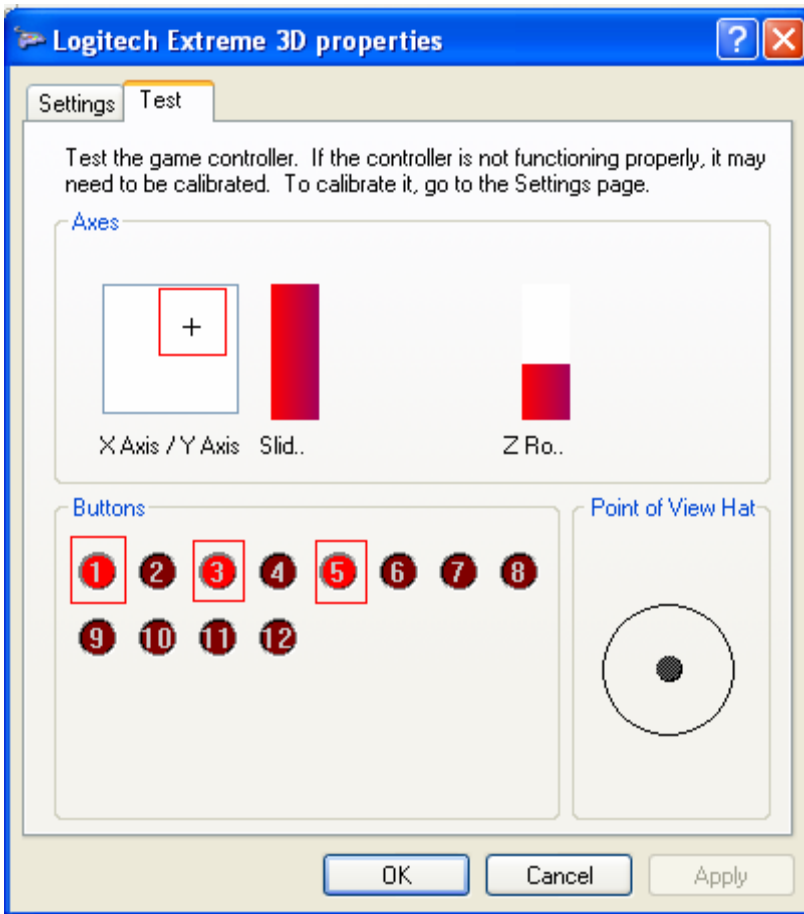
[Support Package]



Step4. If you see the cross in Axes area move up, down, left and right when controlling the joystick up, down, left and right, then the X Axis and Y Axis function is working.

Step5. If you see the button 1 to 12 light up when you push the buttons of your joystick. Then the buttons of the joystick are working.

[Support Package]

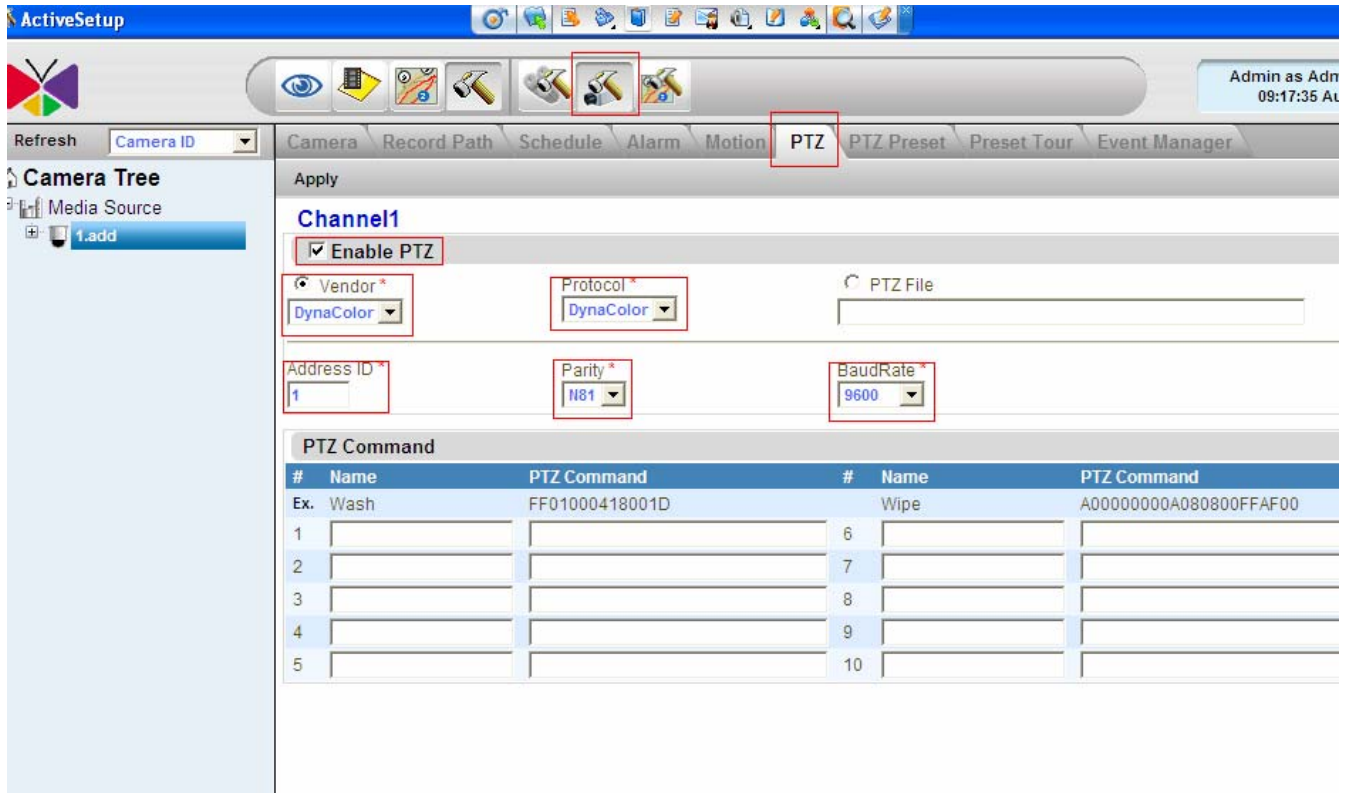


[Support Package]

Chapter2. How to configure USB joystick to work with NVR

Step1. Make sure what the PTZ protocol, Baud Rate, Address ID and Parity are applied on PTZ camera.

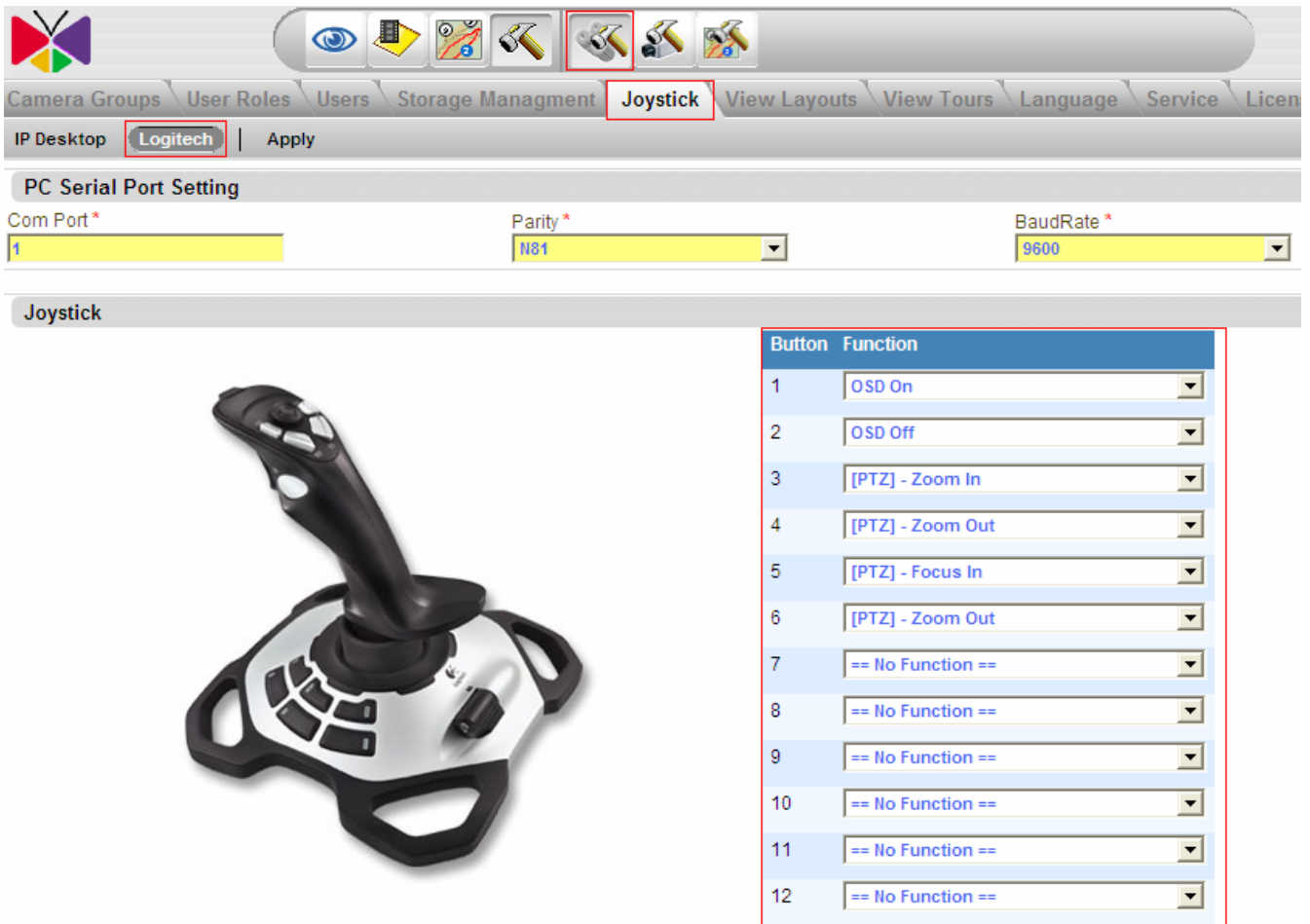
Step2. Run ActiveSetup of NVR2.0\Camera setting\PTZ



Step3. Enable the PTZ checkbox and make sure all settings are the same as what you set to your IP Speed dome.

Step4. Click on Setup System\Joystick\Logitech and you can set functions to button 1 to 12 in button function section

[Support Package]




Camera Groups | User Roles | Users | Storage Management | **Joystick** | View Layouts | View Tours | Language | Service | Licen

IP Desktop | **Logitech** | Apply

PC Serial Port Setting

Com Port * Parity * BaudRate *

Joystick



Button	Function
1	<input type="text" value="OSD On"/>
2	<input type="text" value="OSD Off"/>
3	<input type="text" value="[PTZ] - Zoom In"/>
4	<input type="text" value="[PTZ] - Zoom Out"/>
5	<input type="text" value="[PTZ] - Focus In"/>
6	<input type="text" value="[PTZ] - Zoom Out"/>
7	<input function='="/' no="" type="text" value='="'/>
8	<input function='="/' no="" type="text" value='="'/>
9	<input function='="/' no="" type="text" value='="'/>
10	<input function='="/' no="" type="text" value='="'/>
11	<input function='="/' no="" type="text" value='="'/>
12	<input function='="/' no="" type="text" value='="'/>

Step5. Please follow the button mapping below to configure your button function.

[Support Package]



IMPORTANT: This is a mapping example of Logitech, if you are not using the same joystick, please check below image and map the buttons of your joystick to the image, then you will know the button mapping condition.

[Support Package]

